

Endometrial Cancer

CHI Formulary Treatment algorithm

Treatment algorithm-November
2023

Supporting treatment algorithms
for the clinical management of
endometrial cancer

Figures 1 to 3 outline a comprehensive treatment algorithm on **the management of Endometrial Cancer** aimed at addressing the different lines of treatment after thorough review of medical and economic evidence by CHI committees.

For further evidence, please refer to CHI **Endometrial Cancer** full report. You can stay updated on the upcoming changes to our formulary by visiting our website at <https://chi.gov.sa/AboutCCHI/CCHIprograms/Pages/IDF.aspx>

Our treatment algorithm offers a robust framework for enhancing patient care and optimizing treatment outcomes across a range of treatment options, holding great promise for improving healthcare delivery.

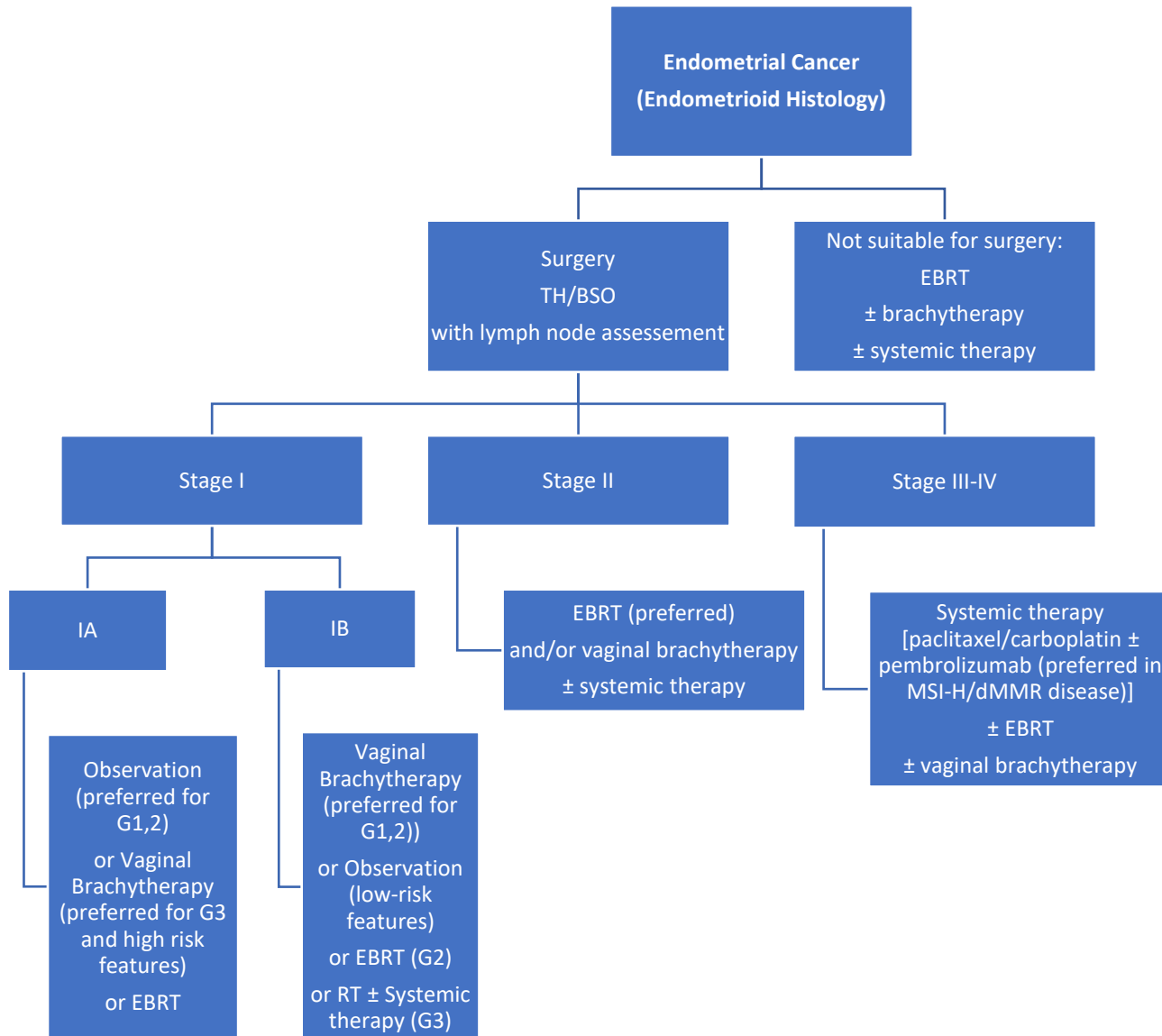


Figure 1: Management of Endometrial Cancer (endometrioid histology)

¹ National Comprehensive Cancer Network (NCCN)

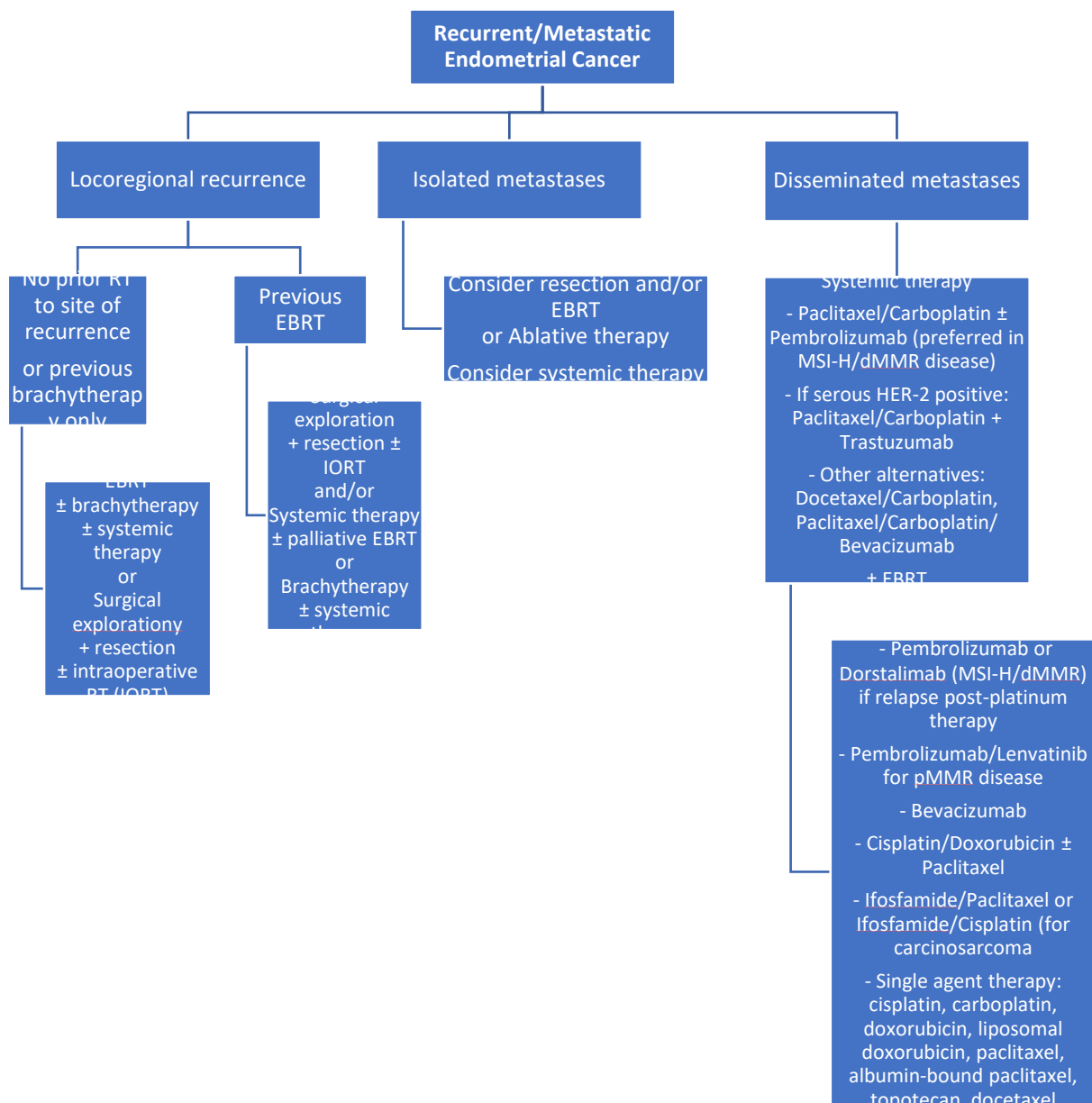


Figure 2: Management of recurrent/metastatic endometrial cancer

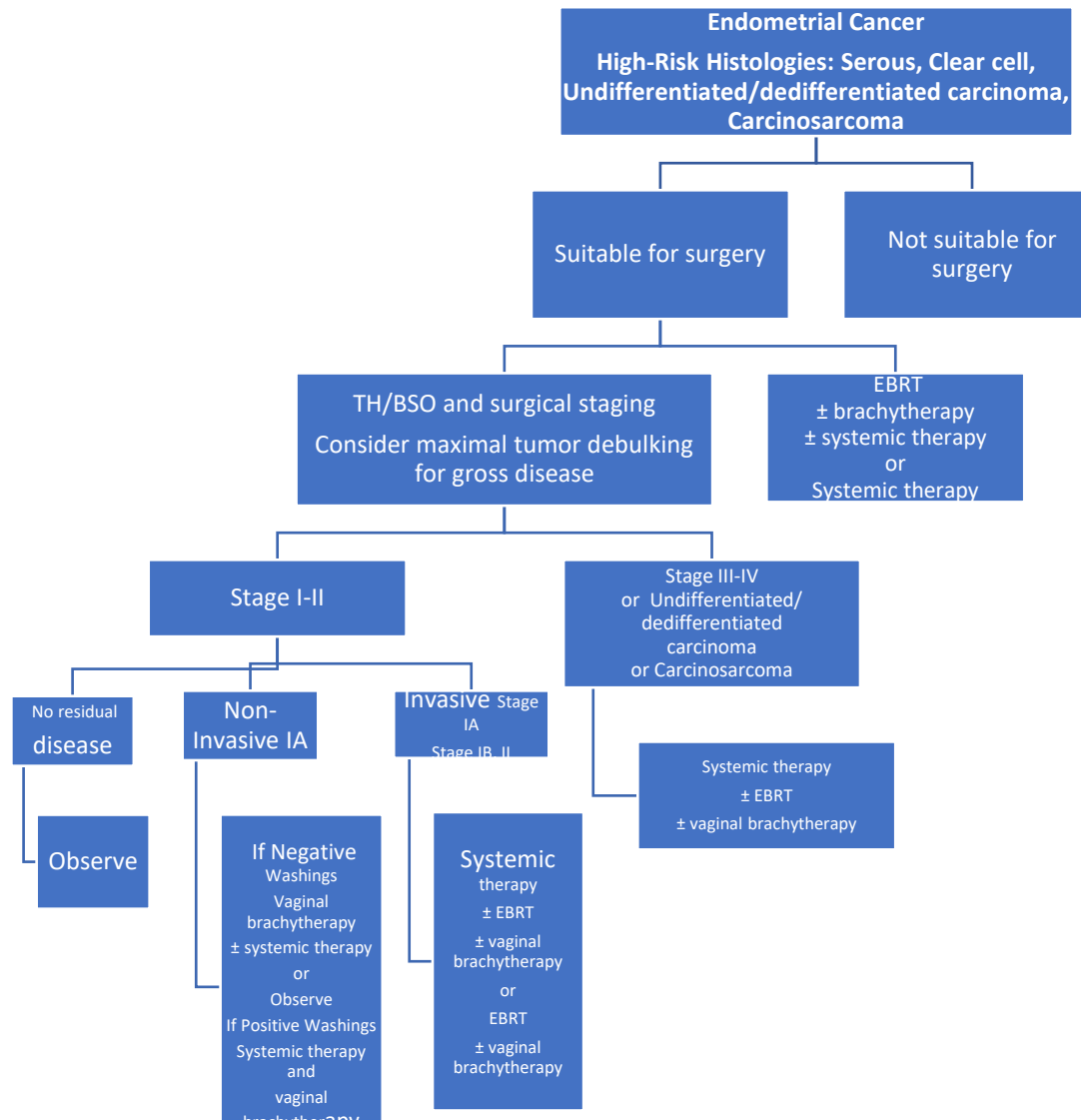


Figure 3: Management of endometrial cancer (high-risk histologies)